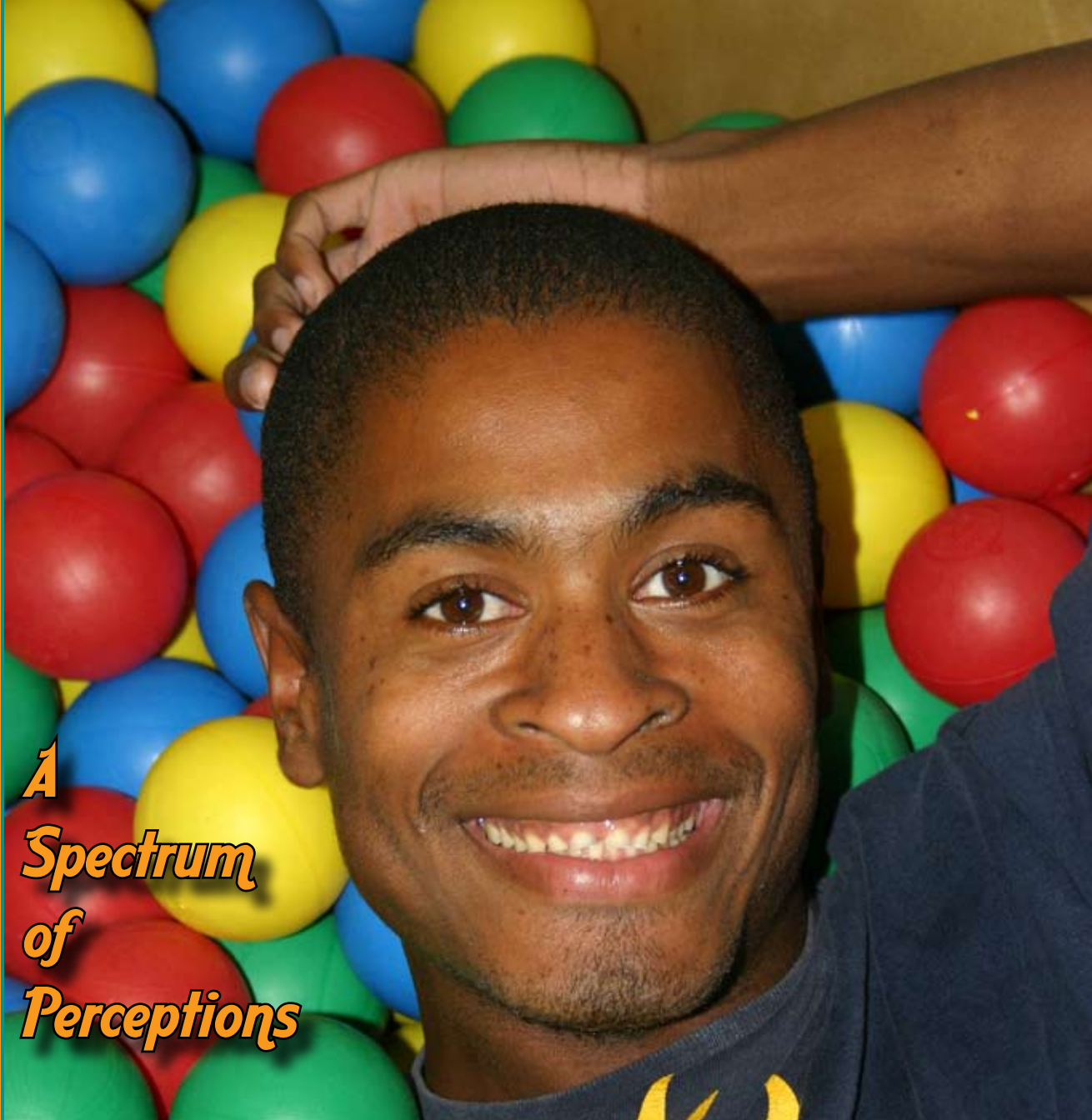




Annual Report 2008



*A
Spectrum
of
Perceptions*



Dear Friends of KETCH:

Imagine what your life today would be like if during your childhood everyone you came into contact with believed that you could not have anything close to a normal life. How we interpret the world largely determines how we experience life. A hostile person lives in a hostile world and a loving person lives in a loving world.

Years ago when institutional placement was the norm, we did not understand what a disservice we were doing to persons with disabilities and to ourselves. We were throwing a lifetime of possibilities away. Today, our community is richer for the opportunities we afford ourselves to have persons with disabilities in the mainstream of our lives.

Thank you for helping KETCH meet its mission of keeping persons with disabilities a vibrant part of our community.

Ron Pasmore

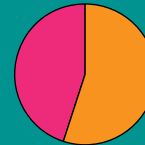
President/CEO

“Don’t believe what your eyes are telling you. All they show is limitation. Look with your understanding, find out what you already know, and you’ll see the way to fly.”

~ Richard Bach (from ‘Jonathan Livingston Seagull’) ~

A Spectrum of Perceptions

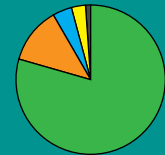
Demographics



Gender
55% Male
45% Female

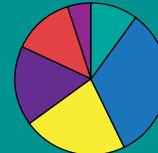
Race

78% White
12% Black
4% American Indian
1% Asian
3% Hispanic
1% Pacific Islander
1% Other



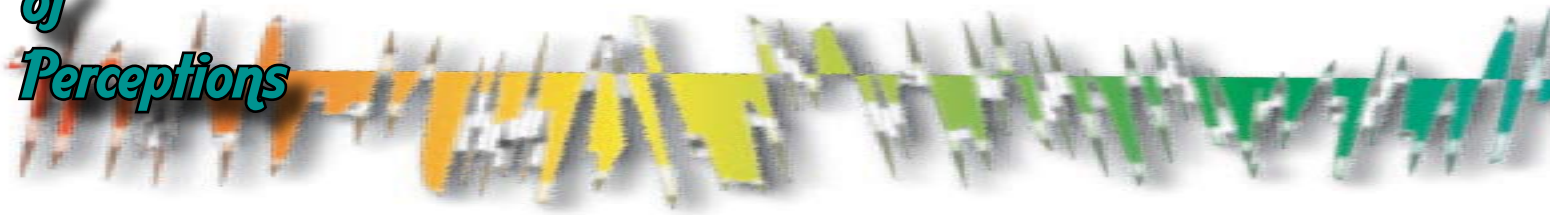
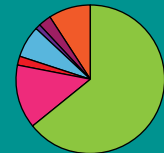
Age

10% Below 21
33% 21-29
22% 30-39
17% 40-49
13% 50-59
5% 60 & over



Primary Disability

65% MR/DD
14% Emotional
2% Neurological
7% Orthopedic
1% Hearing
3% Vision
9% Other



2008 Accomplishments

“To accomplish great things, we must not only act, but also dream, not only plan, but also believe.” -Anatole France

- KETCH celebrated the completion of construction of Richmond Place, a 20-unit apartment complex designed to provide low-income housing to persons with developmental disabilities. This setting was funded through the Low Income Housing Tax Credit program from the Kansas Department of Housing Resources.
- KETCH President/CEO Ron Pasmore won the Mark D. Elmore Award from InterHab for his distinguished career.
- In February of 2008, persons served by KETCH performed on opening night at the Topeka Civic Theatre “The Jellybean Conspiracy”, a theatrical production portraying the lives of persons with disabilities. This was InterHab’s Day at the Capitol event. Persons with disabilities all over Kansas performed the show together for the Kansas Legislature on Thursday, February 21, 2008.
- Charisse Yates, ALS2/Encore coordinator and Laura Roberds, vice president of community services, were invited to give a presentation about Encore at the International CARF conference in Tucson, AZ in March 2008. The Encore program received an exemplary rating during KETCH’s last CARF survey.
- KETCH was selected for the Wichita International Interior Design Association’s “Extreme Interior Makeover”, a fundraising event to create an improved office space for a local charitable organization. The KETCH Community Living department received the remodel.
- The Fifth Annual Golf Tournament raised more than \$17,000 to support programs and services for the individuals with disabilities that KETCH serves.
- A ribbon cutting ceremony was held in honor of the grand opening of Richmond Place on June 27, 2008.
- KETCH formed a Legislative Advocacy Committee to involve consumers, parents, and staff in efforts concerning funding and other issues affecting community services for persons with disabilities.
- The KETCH Carnival and 2nd Annual Talent Show raised nearly \$2,400 to benefit persons served through the KETCH Cares Fund.
- KETCH administrative services moved to a new location at 230 Ida. This required cabling for computer and phone services as well as replacing the existing phone system which was at capacity. KETCH received a grant from the Sunflower Foundation to purchase a new phone system.
- KETCH was awarded a grant from the Kansas Department of Transportation for four new vehicles to transport persons served in the community.
- KETCH was awarded a grant under the New Freedom Rides initiative through the Kansas Department of Transportation to provide transportation for persons who live outside the City of Wichita’s public transit service areas.



“Only in quiet waters do things mirror themselves undistorted. Only in a quiet mind is adequate perception of the world.”- Hans Margolius



A
Spectrum
of
Perceptions



Day Services

Tyler is one of 287 persons who benefit from KETCH day programs, which includes Adult Life Skills, Encore, PACE, ABLE and Work Services.

For Tyler, 27, walking distances can be a challenge. At a young age he was diagnosed with Cerebral Palsy and has had to wear braces on both of his legs to stabilize him in order to walk. While his hands and upper body are not affected, his ability to move is not something he takes for granted. His calves and ankles are very weak and sometimes he has to use a wheelchair.

Despite his disabilities, Tyler smiles often and is usually happy. He is a kind and well-mannered guy. He likes to interact with and help others. He enjoys listening to music, riding in the car, watching favorite television shows and cooking. Tyler has an amazing and supportive family whom he lives with.

His days are spent engaging in activities with others and going out into the community where he enjoys bowling, baseball games, and arcades the most. Tyler attends the Adult Life Skills program where he thrives. He enjoys interacting with his friends and staff. Tyler's world is a bright place.

“The best and most beautiful things in the world cannot be seen, nor touched ... but are felt in the heart.”

- Helen Keller



A
Spectrum
of
Perceptions

Employment Services

Jesse is one of 355 persons who benefit from KETCH's Employment Services program, which provides job placement training for people with developmental disabilities.

Jesse relies heavily on his auditory and other senses in perceiving the world because he cannot see.

Jesse, now 56, lost his vision at the age of 20. The last sight he recalls was that of a beautiful woman when he was leaving church on a Sunday morning in the early 1970s. He was born in Wichita and lived in Arkansas with his grandparents as a young child until he moved back to Wichita.

Jesse got a job at Central States Electric in October of 2008 shredding documents. The search to find work he enjoys was long and difficult because he is blind. He worked at Envision in small assembly for a while, but what he really wanted was a job in the community. KETCH helped him find a job he is proud of.

Jesse says he enjoys his job because it gets him out of the house and he earns money. Jesse is also heavily involved in his church where he used to help in the nursery on a volunteer basis. In his free time he enjoys shopping and eating out.

"I am imagination. I can see what the eyes cannot see. I can hear what the ears cannot hear. I can feel what the heart cannot feel." - Peter Nivio Zarlenga



Fred

A
Spectrum
of
Perceptions



Residential Services

Fred is one of 164 persons who benefit from KETCH's Community Living Services, which provides in-home supports for people with disabilities.

Fred sees the world in the most distinct sense. Because he cannot hear, he largely relies on his other senses to perceive everything around him. He conveys his emotions and communicates through movements, facial expressions, body language and sign language. His perceptions are vastly different than the average person's. He takes the world in through visuals, scents, contact and flavors.

Fred was diagnosed with sensorineural hearing loss at a young age. He spent time in institutions before coming to KETCH. He has received services from KETCH since 1975 when he was referred for vocational and Community Living services.

Fred recently moved into Richmond Place, KETCH's newest housing facility, where he lives in his own apartment. He does not like change, so this was a big step for him. Fred now enjoys living at Richmond Place where he can have his privacy and engage in socialization at his leisure.

2008 Operational Revenue

<u>CATEGORY</u>	<u>TOTAL</u>	<u>FEDERAL</u>	<u>STATE</u>	<u>LOCAL</u>	<u>NON-TAX</u>
HCBS - Medicaid Waiver	\$6,213,423	\$3,728,054	\$2,485,369	-	-
State and Federal	\$1,181,854	\$706,331	\$470,888	\$4,635	-
Manufacturing	\$1,064,931	-	-	-	\$1,064,931
Room and Board Fees	\$886,009	-	-	-	\$886,009
Service Agreements	\$481,302	-	-	\$238,244	\$243,058
Mill Levy	\$466,299	-	-	\$466,299	-
Private Support	\$345,206	-	-	-	\$345,206
Area School Districts	\$67,572	-	-	\$67,572	-
Other Revenue	\$37,411	\$2,400	-	-	\$35,011
TOTAL OPERATIONAL REVENUE	\$10,744,007	\$4,436,785	\$2,956,257	\$776,750	\$2,574,215
Percentage of Total Operational Revenue	100%	41.30%	27.52%	7.23%	23.96%
Interest and Investment Income	(\$79,874)	-	-	-	(\$79,874)
TOTAL REVENUE	\$10,664,133	\$4,436,785	\$2,956,257	\$776,750	\$2,494,341
PERCENTAGE OF TOTAL REVENUE	100%	41.60%	27.72%	7.28%	23.39%

Balance Sheet

July 1, 2007 to June 30, 2008

Assets

Current Assets \$2,402,022

Long-term Assets \$2,344,622

Fixed Assets \$4,597,026

Total Assets \$9,343,670

Liabilities and Net Assets

Current Liabilities \$914,958

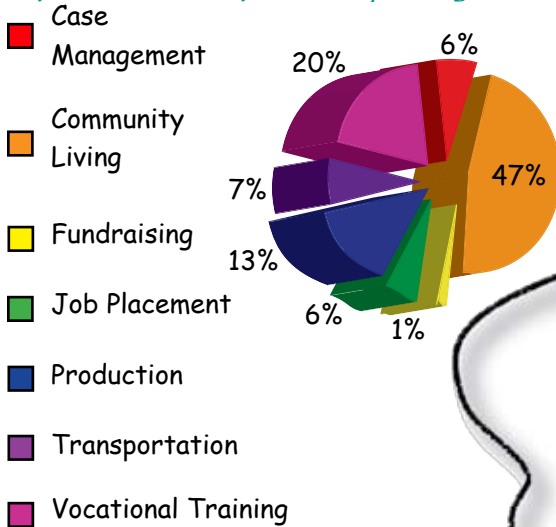
Long-term Debt \$2,171,758

Total Liabilities \$3,086,716

Net Assets \$6,256,954

Total Liabilities & Net Assets \$9,343,670

Operational Expenses By Program



Program Numbers

TOTAL PERSONS SERVED - 666
 Targeted Case Management - 323
 Adult Life Skills - 59
 PACE - 15
 Work Services - 197
 Encore - 16
 Employment Services - 355
 Community Living - 164
 TOTAL - 1,129*

*Some individuals are served in multiple programs.

Board of Directors

Ron Pasmore
 President/CEO
 Frank Springer
 Chairman
 Jim Malone
 1st Vice Chairman
 Carla Bienhoff
 2nd Vice Chairman
 Loren Anthony
 Secretary
 Fred Badders
 Assistant Secretary
 Dan Krug
 Treasurer

Gary Hindman
 KEA President
 Tony Nash
 KEA 1st Vice President
 Jamie Malone
 Ladies Chairperson
 Rosie Boone
 Ladies Co-Chair

Board Members

Cathy Bishop
 Lorenze Karmann
 Ron Larson
 Charles Lester
 Carl Lindsey
 Zona Price

A
Spectrum
of
Perceptions

Return Service Requested



1006 E. Waterman
Wichita, KS 67211

Nonprofit organization
U.S. postage paid
Wichita, Kansas
Permit no. 711

www.KETCH.org

